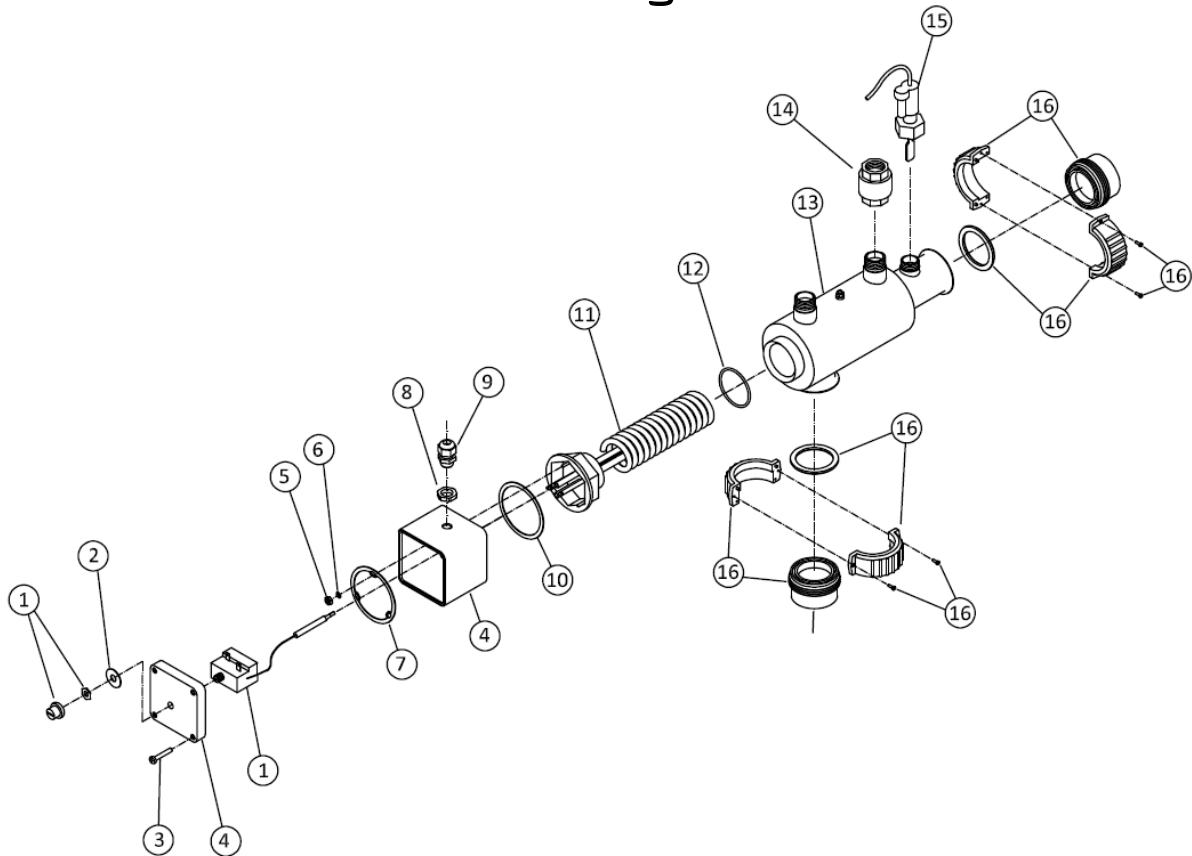


## Dual heat exchanger 2 to 5 kW



### Spare parts

no. Item	no. drawing	material	description of parts
11 09 28	1	various	safety thermostat 55°C
11 09 74	2	EPDM	gasket 24x10
11 12 04	3	stainless steel	self-tapping screw 3,3x19
11 38 08	4	ABS	box
11 04 04	5	stainless steel	nut M4
11 04 08	6	stainless steel	washer
11 09 30	7	stainless steel	mounting ring
11 33 06	8	polystyrene	pressure ring M12 x 1,5
11 33 04	9	polystyrene	cabl gland 3-6,5 mm
11 09 62	10	EPDM	gasket 63x76
11 09 71	11	Incoloy 800	heating element (2 kW)
11 09 72	11	Incoloy 800	heating element (3 kW)
11 09 73	11	Incoloy 800	heating element (5 kW)
11 09 76	11	Incoloy 800	heating element (3 kW/400V)
11 09 01	12	NBR 70 Shore	OR- 44,4x3,53
12 35 01	13	stainless steel AISI 316	housing
11 33 11	14	brass	no-return valve
11 09 52	15	Noryl	flow switch
11 38 09	16	ABS	union half split nut D.50